

APC Back-UPS[®] Pro



Premium Battery Backup with Surge Protection for High Performance Electronics and Computers

550VA, 900VA, 1200VA, 1500VA

- *Reliable*
- *Energy Efficient*
- *User Friendly*

The Back-UPS Pro series offers your home and business guaranteed power protection for high performance computer systems, routers/modems, external storage devices, game consoles and other electronics.

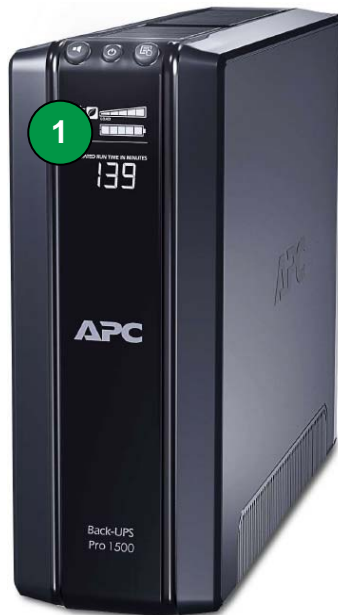
Abundant backup power, auto-shutdown software and protection from damaging surges and spikes are coupled with the Back-UPS Pro's energy saving features, voltage regulation, LCD display and other premium features to make these the perfect units to protect your data and keep you available.



APC Back-UPS Pro Features



Standard on all Back-UPS Pro models



- 1 LCD (Liquid Crystal Display)** gives utility and battery backup the status.
- 2 Automatic Voltage Regulation (AVR)** instantly corrects voltage fluctuations so you can work indefinitely through brownouts and overvoltages.
- 3 “Battery Backup & Surge Protected” Outlets** keep a CPU, monitor and other critical devices running when the power goes out or fluctuates outside safe levels.
- 4 “Surge Only” Outlets** protect printers, faxes or other equipment without reducing battery capacity. (Includes power-saving “Controlled” outlets).
- 5 Data Line Surge Protection** guards against surges and spikes traveling over telephone and network data lines.
- 6 Auto Shutdown Software** allows management of the Back-UPS from your computer
- 7 Push Button Circuit Breaker** enables quick recovery from overloads.
- 8 3 Yr Warranty** for EU countries - 2 years elsewhere, Equipment Protection Policy where applicable (200,000 AUD, 150,000 Euros, 75,000 GBP), free technical phone and online support.
- 9 Automatic Diagnostic Testing** ensures your unit is ready when you need it.
- 10 External Battery Pack Compatibility** dramatically increases run time. (BR1500GI only)

APC Back-UPS Pro LCD Display

Easy to read status of utility and battery backup conditions

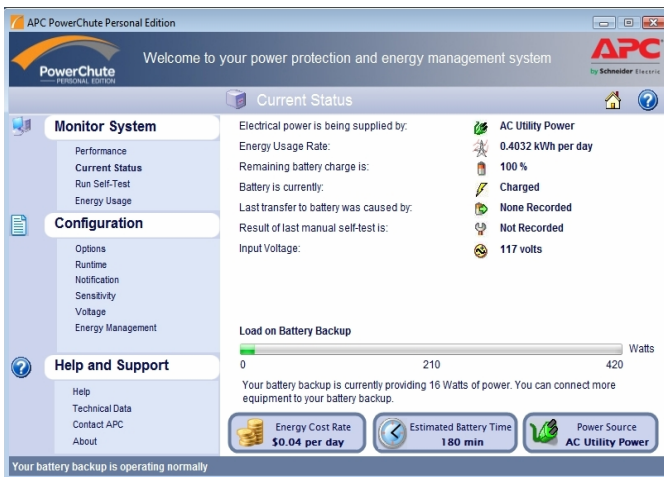


Parameters Displayed:

- Input Power (On Battery/On Utility)
- Input Voltage
- Output Voltage
- Output Frequency
- Load (Watts, % of Capacity, Graphic Display)
- Overload
- AVR Working
- System Fault
- Replace Battery
- Battery Charge Status (Graphic Display)
- Estimated Run Time
- Power Saving Mode (Enabled/Disabled)
- Mute (Enabled/Disabled)
- Number of Power Events

APC PowerChute® Personal Edition

Easy-to-use safe system shutdown software with power and energy management features



- Easy to read view of current power conditions.
- Displays daily energy consumption and cost of powering your equipment.
- Saves money by allowing you to choose an energy management plan that fits your needs.
- Prevents data corruption by saving files and shutting down your system during extended power outages or low battery condition.
- Monitors system, and logs utility power problems and battery conditions
- Allows you to configure Back-UPS options like voltage transfer settings, silencing alarms during night hours, shutdown parameters, energy management features, etc.)
- Easy Installation takes the guesswork out of configuration for first-time users with a jargon-free help feature. (USB and serial interface).

Back-UPS Pro Specifications

Model Number	BR550GI	BR900GI	BR1200GI	BR1500GI
Output				
Output Capacity	550 VA / 330 W	900 VA / 540 W	1200 VA / 720 W	1500 VA / 865 W
Output (on utility)	230V, 50 or 60 Hz, +/- 3Hz (auto sensing)			
Output (on battery)	230V +/-8%, 50 or 60 Hz +/-1 Hz (auto sensing)			
Output Connections	6 total IEC outlets: 3 battery backup & surge 3 surge protection only (incl. 2 Power-Saving outlets)	8 total IEC outlets: 4 battery & surge (incl. 1 power-saving outlet) 4 surge protection only (incl. 2 power-saving outlets)	10 total IEC outlets: 5 battery & surge (incl. 1 power-saving outlet) 5 surge only (incl. 3 power-saving outlets)	
Waveform Type	Stepped Approximation to Sine Wave			
Input				
Input Volt., Freq	230V, 50 or 60 Hz, +/- 3Hz (auto sensing)			
Input Connection	Use existing power cord for system (2 each 1,8 meter IEC-320 jumpers are also provided)			
Surge Protection				
AC Power	All outlets protected			
Data Line	Network: up to 1000 Base-T (gigabit) Ethernet	Analog phone line for phone/fax/modem/DSL Network: up to 1000 Base-T (gigabit) Ethernet		
Physical				
Unit Dims HxWxD	19,0 x 9,1 x 31,0 cm	25,0 x 10,0 x 38,2 cm	30,2 x 11,2 x 38,1 cm	30,2 x 11,2 x 38,1 cm
Unit Weight	6,53 kg	11,7 kg	12,8 kg	13,4 kg
Shipping Dim HxWxD	25,2 x 13,8 x 44,2 cm	33,3 x 22,5 x 48,9 cm	38,2 x 23,8 x 48,9 cm	38,2 x 23,8 x 48,9 cm
Shipping Weight	7,71 kg	12,8 Kg	13,9 kg	14,5 kg
Color	Black			
UPC Code	731304266884	731304279594	731304268758	731304268741
Battery				
Battery Type	Sealed, lead-acid, maintenance-free			
External Battery Pack Compatibility	No			Yes: BR24BPG (Note: also compatible with BR24BP)
Management				
Alarms	Visual (LCD display) and audible alarms			
Shutdown S/W	PowerChute Personal Edition (via USB and serial interface)			
Safety				
Certification/ Approvals	TUV-GS, GOST, CE, C-Tick, A-Tick, KETI, TISI	NEMKO-GS, GOST, CE, C-Tick, KETI, TISI, A-Tick	NEMKO-GS, GOST, CE	NEMKO-GS, GOST, CE

APC by Schneider Electric

132 Fairgrounds Rd
West Kingston, RI 02892

www.apc.com

